

# BERTL

## EXCEPTIONAL



## OKI Printing Solutions C610dtn



34-ppm Monochrome; 32-ppm Color

Print

### Key Buyer Benefits

- Superior print productivity
- HD Color printing technology for sharp detail and rich, vivid color
- 1200 x 600 dpi resolution for crisp, clear output
- Outstanding ease-of-use for clearing misfeeds, loading paper, and changing toner
- Duplex printing capability
- Graphic display on operator panel for ease of use
- The optional 16GB SD memory card facilitates 256-bit encryption which enables secure passage of sensitive documents from PC to printer, with processing and output requiring PIN identification
- The optional 16GB SD memory card provides enhanced security features such as job timeout, if job not retrieved within a certain time
- Offers Job Accounting which enables tracking of color and mono printing costs, easy monitoring of printing activity, and greater control of printer usage
- With Color Correct it makes it easy to adjust colors commonly found in applications such as Microsoft® Word, Excel® and PowerPoint® applications.
- Maximum monthly duty cycle of up to 75,000 pages
- 256 MB standard memory, expandable to 768 MB maximum
- Environmentally-friendly design offers low power consumption and acoustic noise
- One year system warranty and a 5 year warranty on the digital LED printheads for added peace of mind

## 100% INDEPENDENT ANALYSIS

## TABLE OF CONTENTS

<b>Introduction .....</b>	<b>3</b>
Device Features Summary .....	3
BERTL's Galaxy® Star Rating .....	3
<b>Print .....</b>	<b>4</b>
Bandwidth .....	4
Print Productivity .....	5
What We Liked/Would Like To See .....	5
<b>Image Quality .....</b>	<b>6</b>
Density .....	6
Resolution .....	6
Halftones .....	6
Negative/Positive Lines .....	7
Negative/Positive Dots .....	7
What We Liked/Would Like To See .....	7
<b>Ease of Use .....</b>	<b>8</b>
Programming the Control Panel .....	8
Print Drivers .....	8
Routine Maintenance .....	13
Client Utilities and Device Management .....	15
What We Liked/Would Like To See .....	18
<b>Media Handling .....</b>	<b>19</b>
Media Handling Checklist .....	19
Loading Media .....	19
What We Liked/Would Like to See .....	20
<b>Summing Up .....</b>	<b>21</b>
<b>About BERTL .....</b>	<b>22</b>

# OFFICE

In May 2010, OKI Data America introduced the new Okidata C610 digital color printer series. These printers combine HD color technology and fast high quality output speeds. These printers not only deliver fast productivity but also display excellent image quality and outstanding ease of use for small workgroups and businesses.

BERTL recently tested the Okidata C610dtn, which has a rated print speed of 34 ppm in monochrome and 32 ppm in color. The monthly duty cycle is 75,000 pages with high toner yields of 6,000 pages per cartridge with CMY and 8,000 pages using black. The image drum has a high life duration of 20,000 pages. The Okidata C610dtn has flexible media capabilities with a maximum paper capacity of 1,460 pages, the ability to print on stock as heavy as 140lb. index (250 gsm) and sheets up to 8.5"x 14" and banners up to 8.5" x 52".

The new Okidata C610dtn digital color printer is designed to be easy on the environment and offers the following features:

- Energy Star compliant
- The color display and navigation keys makes operation simple with an informative graphical user interface
- HD Color printing technology and high-quality 1200 x 600 dpi produces smooth and rich business graphics
- Users can control color quality output with the Color Swatch utility which matches custom colors to the color values on their C610dtn device
- Powerful 533 MHz PowerPC CPU for high speed performance and 256 MB RAM that is expandable to 768 MB
- View job queues and check supply levels remotely with Okidata's embedded web page PrintSuperVision
- Advanced Security features available with the optional 16 GB SD memory card include: PIN/password-enabled; AES 256-bit encryption; Message Authentication Code (MAC) Network Interface supports 1 Gigabyte Ethernet, address filtering, MAC address filtering, SNMP v3, SSL/TLS, IPP over SSL/TLS, E-mail authentication, and Protocol lockouts
- Comes standard with Job Accounting Software that Tracks color and monochrome pages by individual or departments
- Color Access Policy Manager allows control over color printing access and converts unauthorized color print jobs to black & white
- Versatile media handling and flexibility, with the ability to print on stock as heavy as 140 lbs index (250 gsm) and sheets from 3" x 5" cards, 4" x 6" and 5" x 7" photo paper, to banner-size sheets

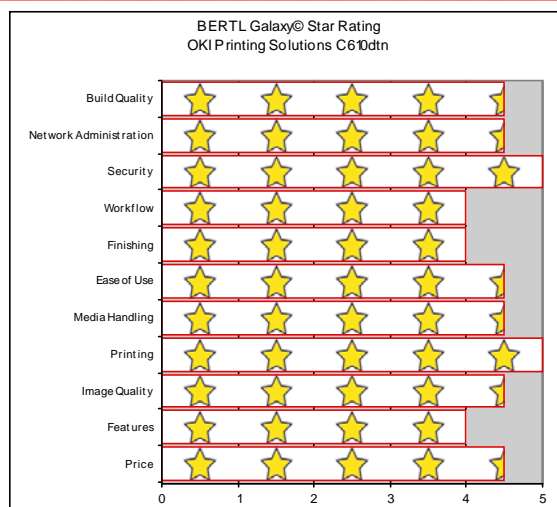
This device is available in four configurations and sold exclusively through Okidata authorized providers and direct marketing resellers in the United States, Canada and Latin America. Pricing for each model in the series is as follows:

- Okidata C610n \$699.00
- Okidata C610dn \$839.00
- Okidata C610dtn \$1,029.00
- Okidata C610cdn \$1,149.00

In the following test report, BERTL takes an in-depth look at the Okidata C610dtn, testing and evaluating its productivity, image quality and ease-of-use.

Okidata C610dtn Features Summary	
List Price	\$1,149.00
Imaging Technology	LED
Standard Functions	Network Printing
Optional Functions	None
Maximum Monthly Print Volume	75,000
Mono Print Speed	34 ppm
Mono First Page Out Time	8.0 seconds
Color Print Speed	32 ppm
Color First Page Out Time	9.0 seconds
Automatic Duplex	Yes
NT Authentication	Yes, with optional 16 GB SD memory card
LDAP Compatibility	Yes
Hard Disk Overwrite	Yes, with optional 16 GB SD memory card

### BERTL'S GALAXY® STAR RATING



## PRINT PRODUCTIVITY

Evaluating print productivity is not as simple as timing copy jobs. The printing process involves several steps and can be affected by a variety of factors along the way.

The document must first be spooled by the print driver into a PCL or PostScript® file. The PCL or PostScript® file is then sent to the printer where it is raster image processed (Ripped) into image data by the device processor. The image data is then sent to the marking engine and output as printed pages.

It is possible to time and compare these factors through the use of careful preparation, conditioning and testing. Following are charts that show printing performance when tested under controlled conditions.

## NETWORK PRINTING SYSTEMS

+ The Okidata C610dtn delivers multiple emulations including the following: PCL® 6, PCL 5c; PostScript® 3™; IBM® PowerPrinter®; Epson® FX; Windows® Vista® XPS and PDF v1.7.

+ All of the print drivers offer bidirectional communication with its user-selectable interface for all of the Windows based operating systems.

+ High print resolutions of up to 1200 x 600 dpi for enhanced image quality.

+ Driver supports the following OS's: Standalone and network: Windows 7, Vista, XP, Server 2003/2000/2008; Mac® support: OS X 10.3 and higher.

+ Supported network protocols include: TCP/IP, NetBEUI, NetWare and EtherTalk.

+ Users can connect to the Okidata C610dtn via 10/100 Base-T Internal Ethernet Print Server USB v2.0; USB Host I/F connection.

+ Advanced Network Security features include IP address filtering, MAC address filtering, SNMP v3, SSL/TLS, IPP over SSL/TLS, E-mail authentication, Protocol lockouts.

+ Encrypted Secure Printing features include the following: PIN/password-enabled; AES 256-bit encryption and Message Authentication Code (MAC).

+ Fast productivity with the 533 MHz PowerPC CPU and 256 MB of memory that is upgradable to 768 MB.

+ Optional 16 GB SD memory card for added storage.

## TESTING RESULTS

Network-Bandwidth/Print File Sizes				
	Native File Size	PCL	PS	XPS
1-page Digital Photo PDF	4.48 MB	12.2 MB	5.80 MB	762 KB
4 page Passport Form PDF	0.08 MB	502 KB	522 KB	144 KB
16-page Magazine in PDF	1.78 MB	265 KB	3.45 MB	1.14 MB
22-page Excel Worksheet	0.12 MB	14.5 MB	3.80 MB	1.23 MB
32-page Text-Based PowerPoint	0.23 MB	5.28 MB	2.51 MB	1.30 MB
32-page Graphic PowerPoint	4.20 MB	18.1 MB	22.9 MB	4.99 MB
32-page Graphic PowerPoint Duplex	4.20 MB	18.1 MB	22.9 MB	4.99 MB
38-page Form Word Document	0.91 MB	8.58 MB	14.8 MB	3.05 MB
50-page Text-Based PDF	0.17 MB	7.03 MB	1.80 MB	906 KB
50-page Text-Based PDF Duplex	0.17 MB	7.03 MB	1.80 MB	906 KB

Print Productivity in Color (PPM)				
# of Originals	Mode	PCL Driver	PostScript Driver	XPS Driver
32	Simplex	32.5	21.8	14.4
32	Duplex	27.5	19.1	12.2

\*Color print productivity is evaluated based on a graphic based letter sized 32 page PPT file.

Print Productivity in Monochrome (PPM)				
# of Originals	Mode	PCL Driver	PostScript Driver	XPS Driver
50	Simplex	34.5	34.4	24.2
50	Duplex	30.9	31.9	24.4

\*Monochrome print productivity is evaluated based on a text based letter sized 50 page PDF file.

## WHAT WE LIKED

- Tested simplex black-and-white network-print speed was as fast as 34 ppm using both the PCL6 and PostScript drivers, matching Okidata's rated speed of 34 ppm.
- Tested simplex black-and-white network-print speed was as fast as 24 ppm using the XPS driver.
- Tested simplex color network productivity was up to 32 ppm using the PCL driver, 21.8 ppm with the PostScript driver and 14.4 ppm using the XPS driver.
- Tested duplex black-and-white network-printer productivity was very productive up to 31.9 ppm with the PostScript driver.
- Tested simplex color network productivity up to 27.5 ppm with the PCL driver.
- Tested First-Page-Out-Time was 11.86 seconds in black-and-white and 12.03 seconds in color.
- In BERTL's job stream test the PCL6 driver completed the stream job test in 8 minutes and 23 seconds, running at 29 ppm, which translates to an efficiency rate of 87%. Using the PostScript driver the efficiency rate was up to 65% and 57% using the XPS driver

		First Page Out Time (seconds)			Total Job Time (seconds)		
Job List	Mode	PCL6	PS	XPS	PCL6	PS	XPS
1-page Digital photo print original	1:1	16.03	30.09	30.06	16.03	31.40	30.06
4-page Passport Form PDF	1:1	11.86	12.77	20.49	17.25	18.25	26.16
16-page Magazine PDF	1:1	20.43	15.02	29.49	45.81	48.81	70.62
22-page Excel Worksheet	1:1	22.27	11.59	37.59	55.25	45.07	70.47
32-page Text-Based PowerPoint	1:1	13.27	17.33	51.77	64.75	71.79	112.59
32-page Graphic PowerPoint	1:1	12.03	17.30	40.59	64.19	102.57	169.81
32-page Graphic PowerPoint (duplex)	1:2	20.64	27.05	71.86	83.50	113.25	207.84
38-page Form Word Document	1:1	14.30	13.05	35.43	75.81	75.37	96.79
50-page Text-Based PDF	1:1	14.33	14.80	86.27	93.25	91.78	164.06
50-page Text-Based PDF (duplex)	1:2	20.58	19.43	43.62	113.53	109.37	136.41



## IMAGE QUALITY

BERTL evaluates the output of several “test targets” in order to determine image quality. Following are descriptions of key elements of image quality. Note the numbered examples on each of the test targets shown in the right column.

### Office Color Image Quality

1. **Density of Solid Areas** - Better contrast; more vivid overall images
2. **Line Work** - Better production of lines and text
3. **Halftones** - Better production of photographic and screened images
4. **Negative/Positive** - Better production of fine detail

### Photographic Color Image Quality

5. **Flesh tones** - Better production of portraits
6. **Banding** - Better solid and dithered fill
7. **Low Contrast** - Better production of dark images
8. **Saturation** - Better production of bright colors
9. **Caste** - Better color fidelity
10. **Fine Detail** - Better reproduction of fine details

Density of Solid Areas*	
	Print Density
Black	1.19
Cyan	1.30
Magenta	1.05
Yellow	1.34

\*Density is on a scale of 0 to 2.5, with 2.5 being the best possible.

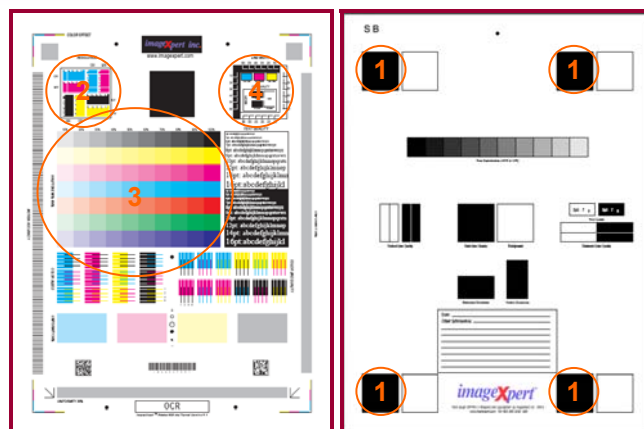
Print Resolution*		
	Print Resolution	
	Vertical	Horizontal
Black	2.0	2.0
Cyan	2.0	2.0
Magenta	2.0	2.0
Yellow	3.0	3.0

\*Line Pairs per Millimeter. For printer resolution, lower is better (range, 1.0-5.0).

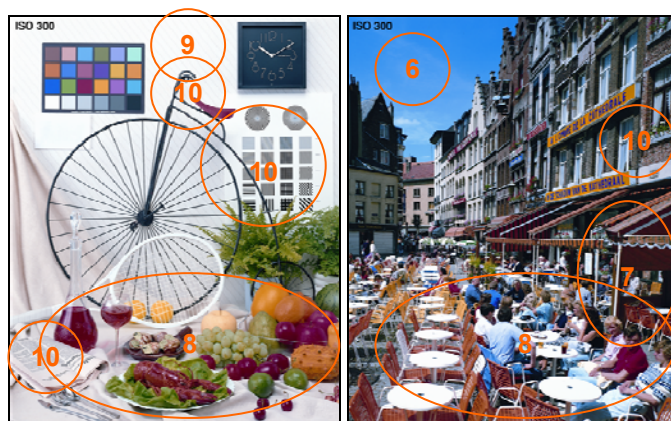
Print Halftones		
	Min. Gradation*	Max. Gradation**
Black	10	100
Cyan	10	100
Magenta	10	100
Yellow	10	100

\*Minimum gradation is on a scale of 10 – 100 percent in 10 percent increments. The best possible minimum gradation is 10 percent.

\*\*Maximum gradation is on a scale of 10 – 100 percent in 10 percent increments. The best possible maximum gradation is 100 percent.



BERTL uses ImageExpert printer test targets for the evaluation of printed image quality. BERTL technicians measure image density and evaluate the device's ability to produce a full range of halftones and various sizes of negative/positive text, dots and lines in each primary printing color (CMYK).



BERTL uses synthetic (photographic) test images obtained from ISO International Standard 12640--Graphic Technology--Prepress digital data exchange--CMYK Standard Color Image Data (CMYK/SCID) in order to evaluate the ability to print photographic images.

## IMAGE QUALITY

Negative/Positive Lines*				
Line Width (points)	Negative		Positive	
	Vertical	Horizontal	Vertical	Horizontal
1	√	√	√	√
2	√	√	√	√
3	√	√	√	√
4	√	√	√	√
5	√	√	√	√
6	√	√	√	√

A "√" mark indicates the device was able to print the line width correctly.  
\*Chart cells containing an "x" indicate that the printer was not able to print the line width correctly. Overall, the fewer "x's," the better the image quality.

Negative/Positive Dots*	
Line Width (points)	% of Dots Printed
1 pixel Black	100
1 pixel Black Neg	100
1 pixel Cyan	100
1 pixel Magenta	100
1 pixel Yellow	100
2x2 pixel Black	100
2x2 pixel Black Neg	100
Checkerboard apparent?	No

\*On a scale of 0 – 100%. The higher the percentage, the better.

Photo Quality	
	Ranking (1-5)*
Fleshtones	4.0
Banding	4.0
Low Contrast	4.5
Saturation	4.0
Caste	4.5
Fine Detail	4.5

\*Based on a scale of 1 – 5, with 5 being the best.

## WHAT WE LIKED

- HD Color printing technology produces smooth and rich colors in photos and business graphics.
- High-Quality 1200 x 600 dpi printing provides clear, crisp images, even on jobs with fine detail.
- BERTL test files containing full bleed solid colors printed evenly and consistently with no visible banding across the page.
- Great print density.
- Output displayed great line control, printing all of BERTL's negative/positive test lines correctly.
- Good halftone reproduction when printing the majority of all the four colors (CMYK).
- Excellent resolution in all colors (CMYK).
- BERTL photographic test files displayed realistic fleshtones with a smooth and matte finish.

## PROGRAMMING THE CONTROL PANEL

A control panel's ease of use or lack thereof can often have a significant effect on user productivity. The harder it is to select frequently used options such as duplexing, document finishing, etc., the more time the user has to spend programming the device and the less productive they are. The Okidata C610dtn's control panel consists of a color LCD screen with a navigation key panel that makes operation simple. The LCD screen also displays gauges of toner levels so users can easily see the levels at a glance.

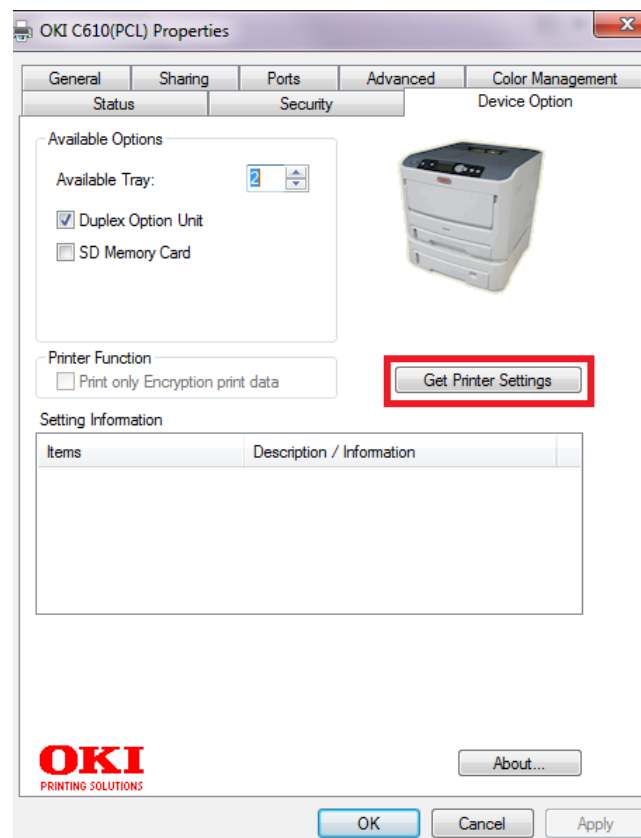


## PRINT DRIVERS

As with control panels, print-driver design can vary enormously from manufacturer-to-manufacturer. Okidata has made it an effortless procedure with their design of the PCL, PostScript and XPS drivers. The drivers are the same as other Okidata device drivers, which will make it especially easy for Okidata users to quickly acclimate to it.

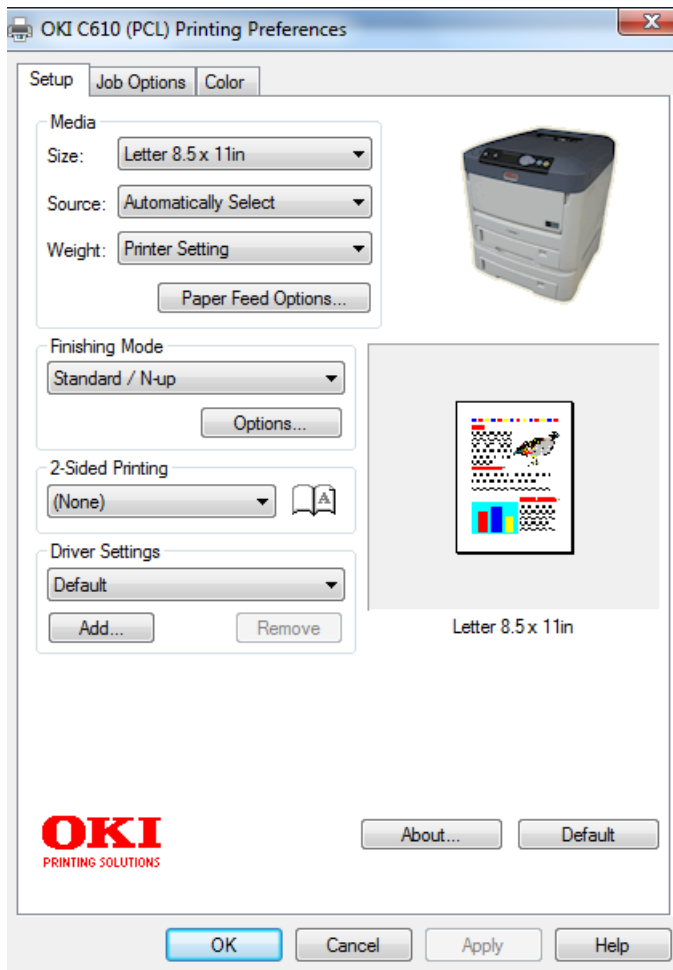
Print-Driver Checklist	
Do print drivers have identical user interfaces?	Yes
Are print drivers interfaces identical to other models from this vendor?	Yes
Are finishing, duplex and paper tray selections located on the first tab?	Yes
Bidirectional communication within print drivers?	Yes
Auto device configuration from within print driver?	Yes
Does print-driver installation require rebooting of the workstation?	No
Are print-driver deployment processes included?	Yes
Are print-driver deployment guidelines and procedures included?	Yes

## PCL DRIVER

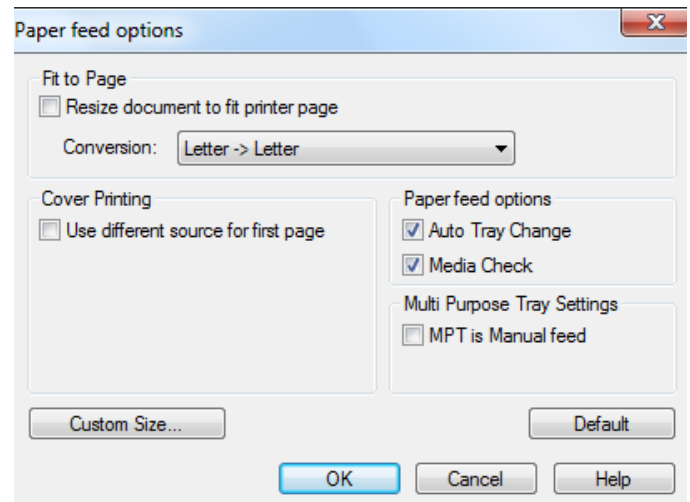


In order to specify system defaults and installed options, administrators select the Printers and Faxes folder from the Microsoft Windows' Start menu, and then select one of the Okidata C610dtn drivers. Administrators can select the "Get Printer Settings" option and installed options will be automatically indicated in the print driver.



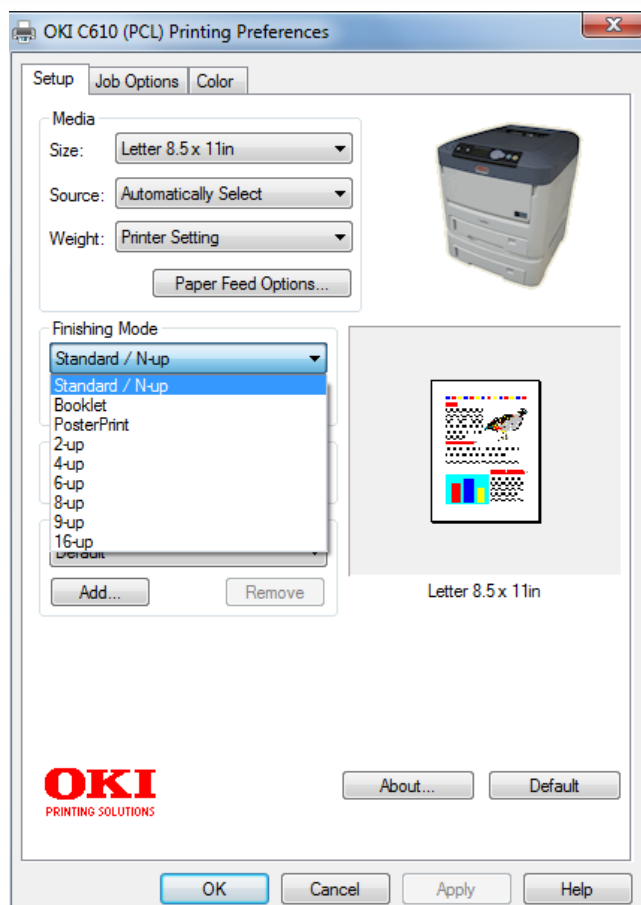


The PCL driver's first tab Setup provides basic options such as paper size, source, weight, finishing mode, duplexing, etc. The image in the lower right indicates the currently selected settings.



The Paper Feed Options dialog allows you to set items related to Fit to Page, Cover Printing, Paper Feed Options and Custom Size.

The Cover Printing option is a function not commonly seen in most printers. This feature allows you to select a different paper type for the outside covers of a print job.

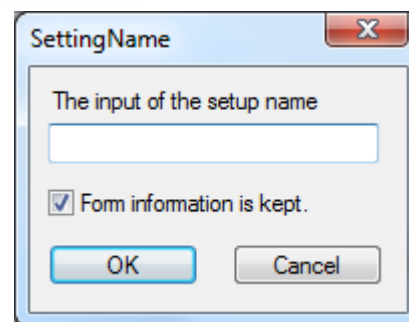


Finishing options available with this driver include Standard / N-up, Booklet and Poster Print.

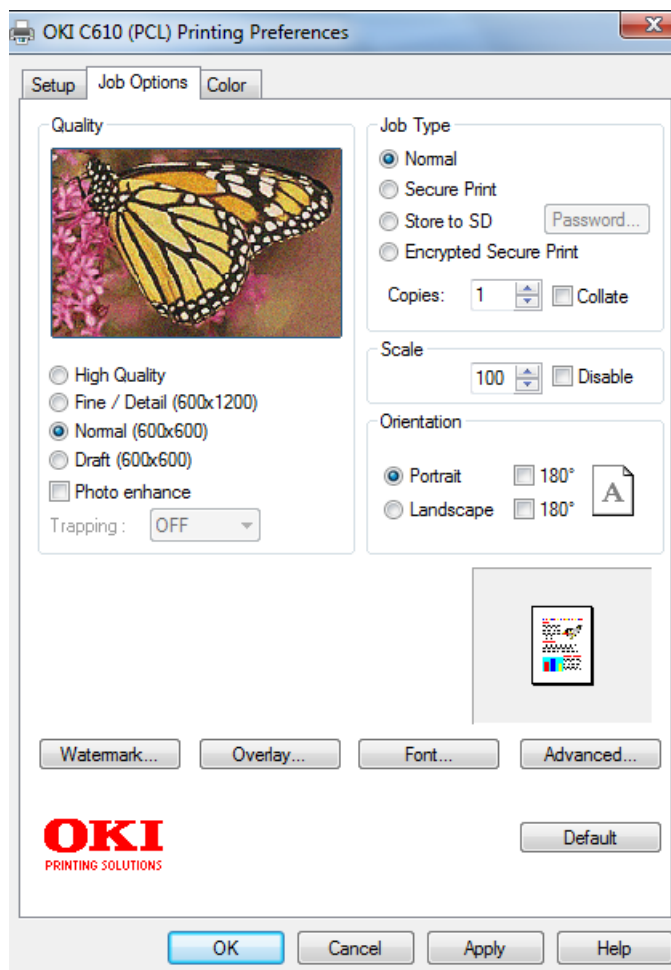
The Standard N-up feature allows users to print multiple pages in one sheet, with each page image reduced in size.

The booklet print function allows users to create a document consisting of multiple pages with two page images printed on the front- and back-sides of each sheet of paper. The printed pages will then be folded in half to create a booklet, or series of booklets that will be combined to create a book.

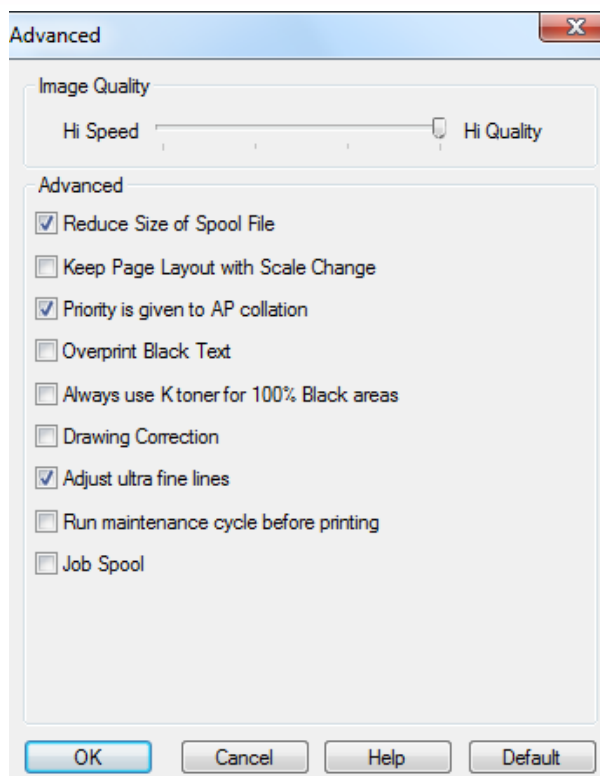
The Poster Print option allows users to print a one-page document into multiple pages by enlarging the scale of the original document.



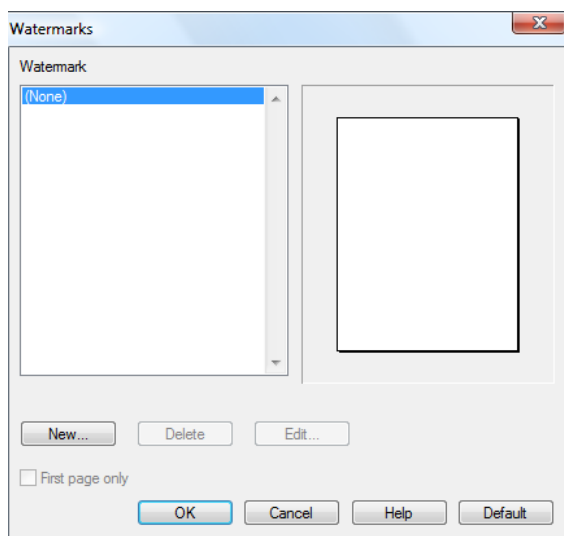
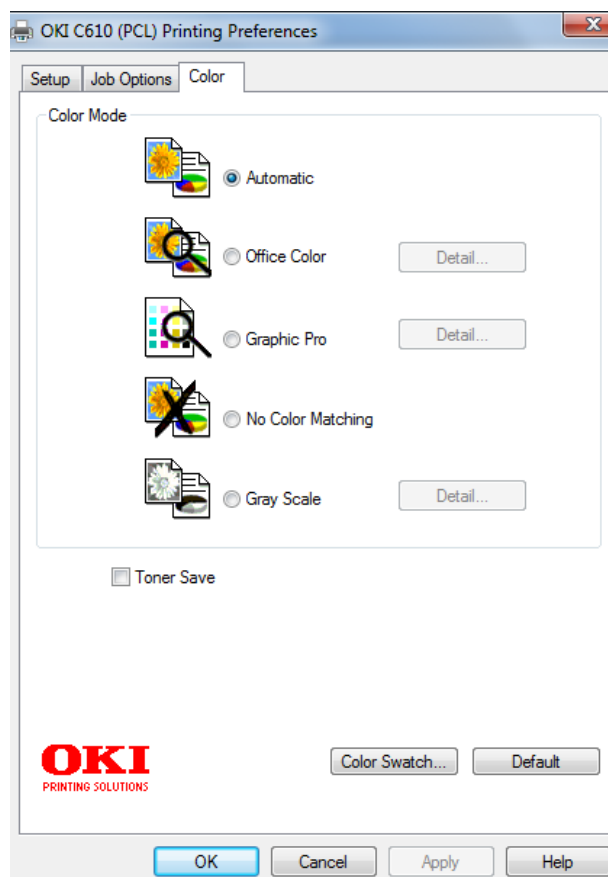
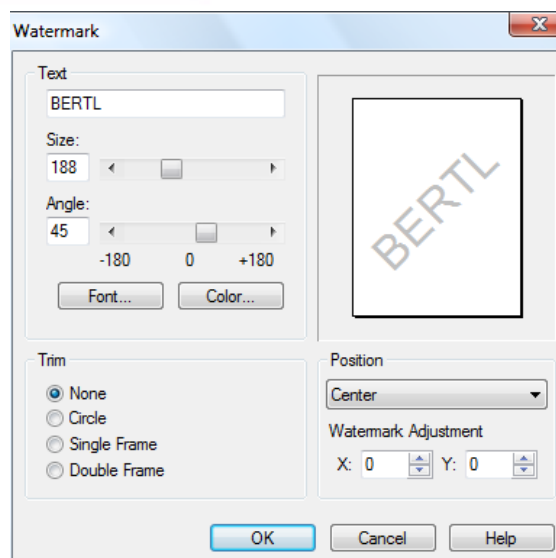
The Driver Settings option allows users to create and save customized settings. This feature is designed to save the user time when printing similar jobs which require the same finishing options.



The Job Options tab contains settings for image-quality, number of copies, scale, orientation, watermarks, etc.



The Job Options' tab provides a link to an Advanced tab that provides options for reducing spool files; overprint black text, adjust ultra fine lines and etc.



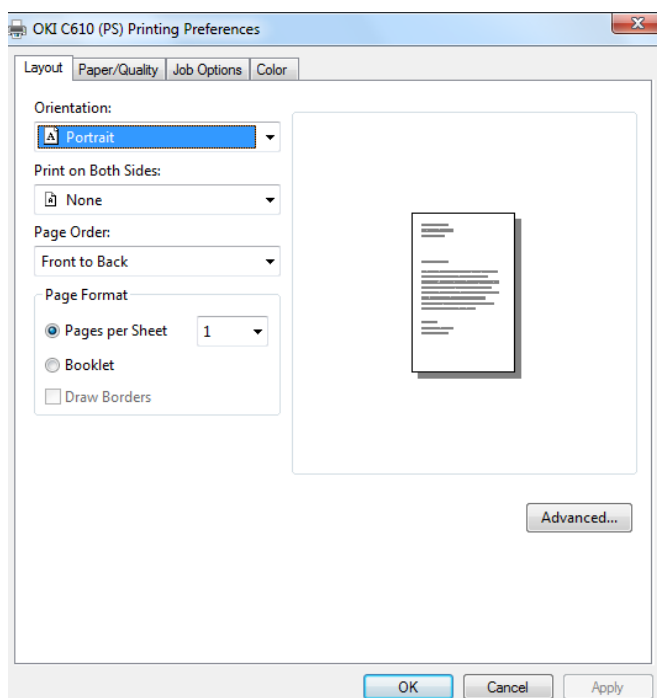
**Above and next column:** Users can specify watermarks to be printed on specific pages. Users can also create a custom watermark and tailor the look and feel of it to match their corporate standards.

The Color tab provides options that include Automatic, Office Color, Graphic Pro, No Color Matching and Grayscale. These options allow the printer to adjust the colors specified in the document and print them accordingly.



The Color Swatch Utility enables users to print out charts that indicate how specified colors will appear when printed by the device.

## POSTSCRIPT DRIVER



The PostScript driver offers common paper and image quality settings as well as options for storing files to a SD card and secure print (the user is prompted to enter a password which must also be entered at the control panel of the device in order for the job to print).

## XPS DRIVER



The XPS driver is virtually identical to the PCL5c and PCL6 drivers, providing a bidirectional communication between a user's PC and device eliminating the need for users to manually update the devices components. This driver offers the most common paper and image quality settings.

## ROUTINE MAINTENANCE

The Okidata's maintenance intervals offer a high monthly duty cycle of 75,000 pages and high toner yields of 6,000 pages per cartridge with CMY and 8,000 pages using black. The image drum life also has a high life span of 20,000 pages.

The OKI Printing Solutions C610dtn has a small amount of consumable items that any user can easily change with great ease of use. All misfeed areas, toner cartridges and the fuser unit are easily located. BERTL found locating and changing these items to be a straight-forward and easy process.

Maintenance Checklist	
Load ink/toner while running?	No
Requires rear access to maintenance items?	No
Requires side access to maintenance items such as toner cartridge?	No
All-in-one imaging units?	No
User-disposable waste item(s)?	Yes

## REPLACING TONER



In order to replace the Okidata C610dtn consumables, the user must lift up the top cover.



**Above and below:** Once the cover is open, the user can then replace the toner cartridges by turning the blue levers forward and lifting the toner out for replacement.





## REPLACING THE FUSER UNIT



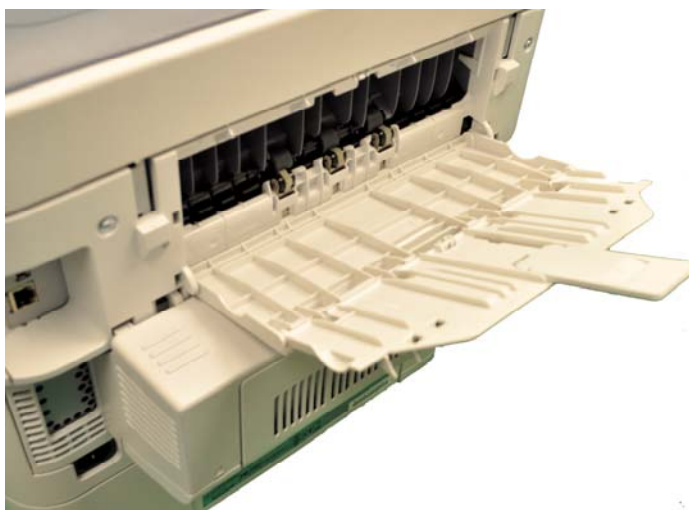
**Above and below:** The printer's fuser unit must periodically be replaced. The user first opens the top cover; the fuser is located toward the back. The user must be careful, as, if the printer has been powered on, the fuser will be hot. The user then unlocks the blue levers and, grasping the fuser by its handle, pulls it out.



## MISFEED ACCESS



The front misfeed area is accessed by lowering this door. Once open, the user can clear any jammed paper.



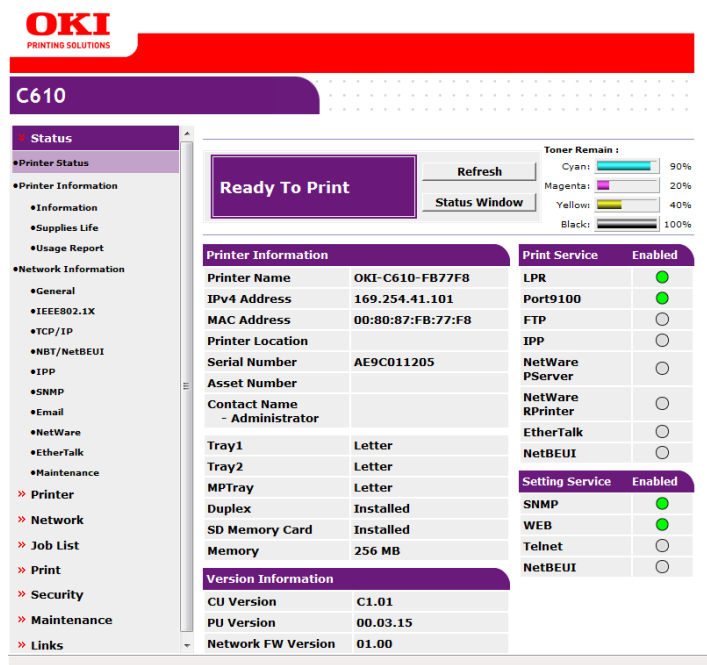
The rear exit paper misfeed area can be accessed by pulling this cover down and clearing any misfeeds.



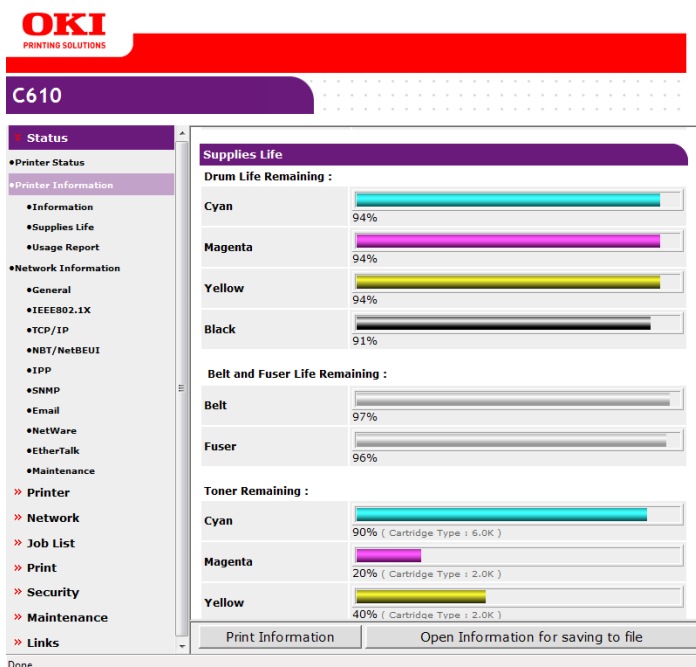
The duplex misfeed-access area is located on the back of the printer. The user simply presses this gray release button and lowers the panel down.

## CLIENT UTILITIES AND DEVICE MANAGEMENT

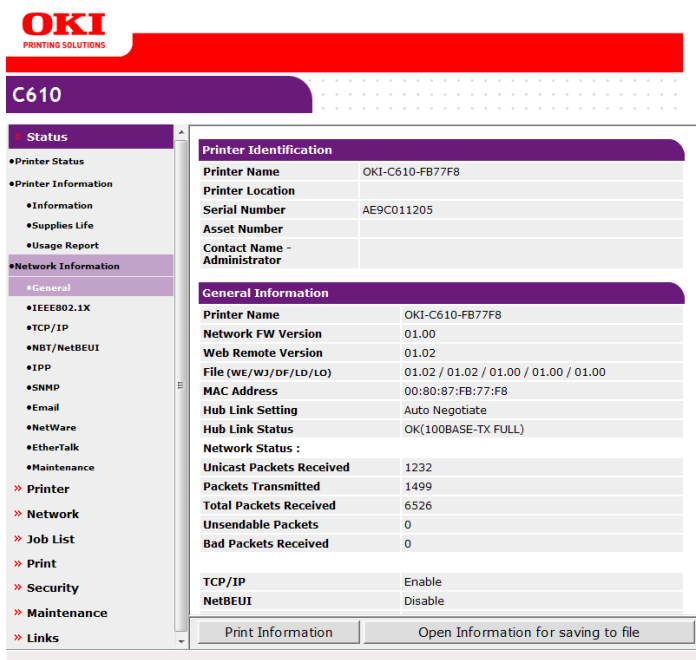
In order to take the best and most efficient advantage of a device and its capabilities, as well as ensure maximum uptime, clients need an efficient way to access and monitor the device. Okidata offers an embedded web page call PrintSuperVision's Printer Status page that helps administrators and users to monitor their devices.



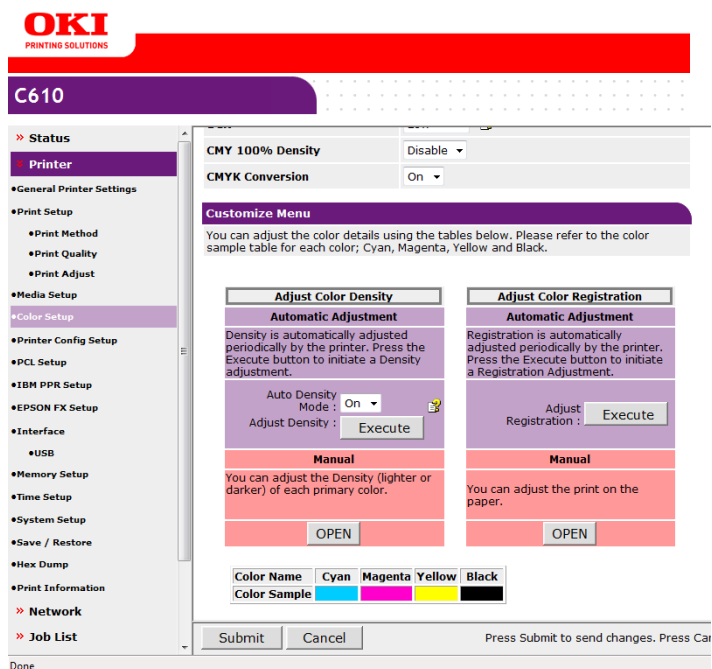
The PrintSuperVision's Printer Status page provides device status, installed paper sizes, and installed options. Additional information includes toner status, print services enabled, and version information.



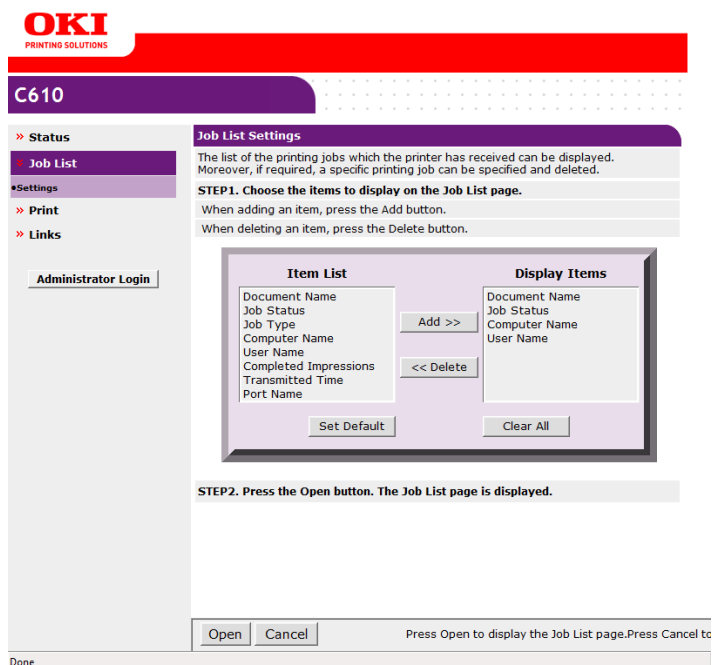
Users can check the status of consumable levels for toner, drum life, transfer belt and fuser units.



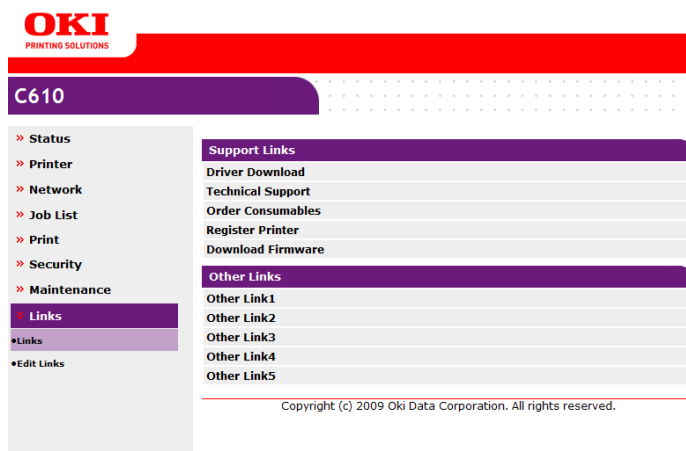
Network administrators can easily configure network settings, gateway, authentication and device credentials within the web interface.



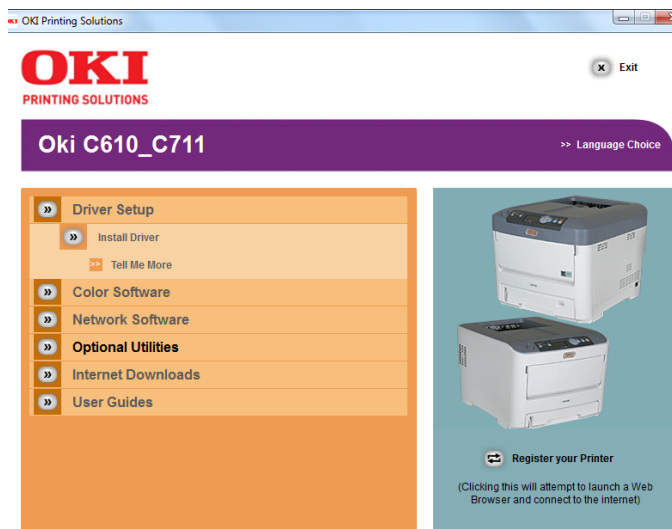
Users can perform color calibration on the Okidata C610dtn from the embedded web page.



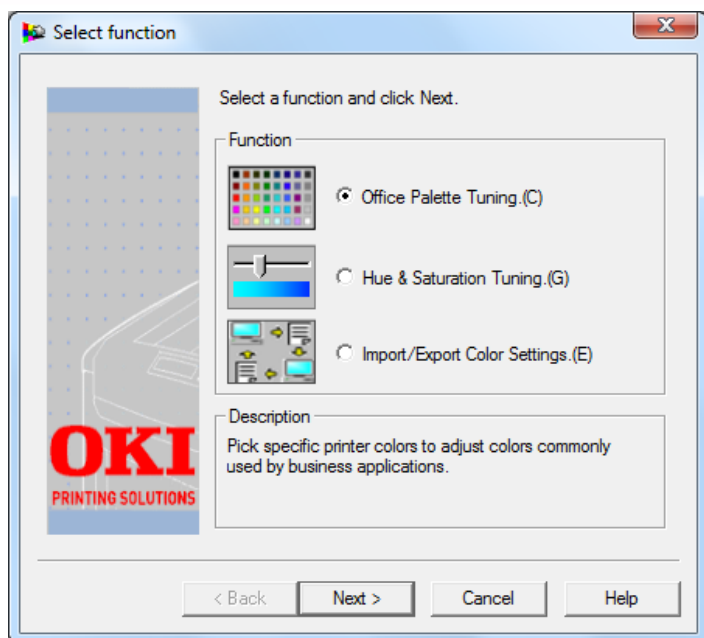
The Job List page allows users to view the jobs that have submitted to the device for printing. Some of the print jobs submitted can be deleted directly from the web interface shown in the next page.



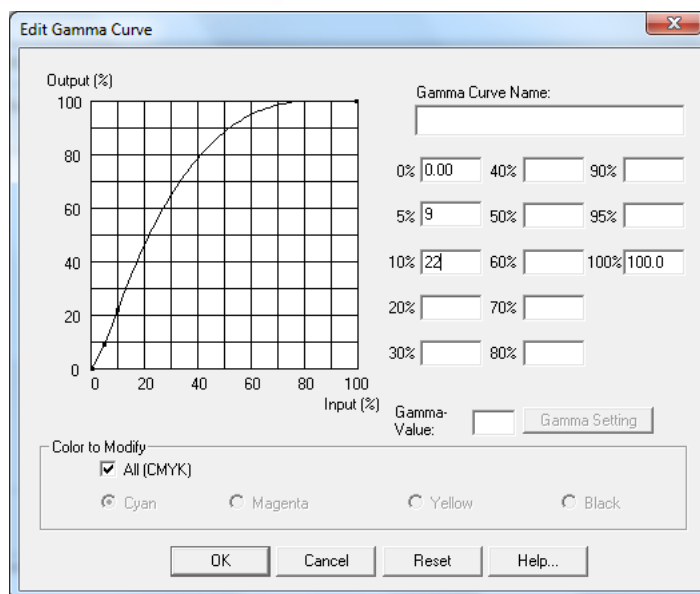
The Links page which can be modified by the network administrator, allows users to quickly locate and download print drivers, find technical support documents, order consumables and download device firmware.



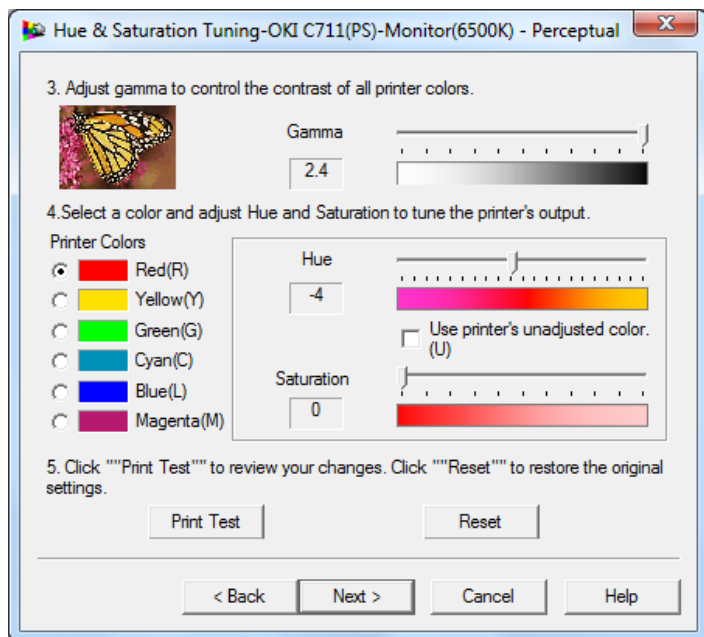
The Okidata C610dtn comes with automated installation software to get the device out of the box and running smoothly on your network in minutes.



**Above and below:** The Color Correct utility is designed to help adjust how RGB colors are printed. As well as making it easier for users to adjust colors commonly found in applications such as Microsoft® Word, Excel® and PowerPoint®. This utility also lets users adjust the overall color of a print by controlling the lightness, darkness and contrast of images, and the intensity and lightness of the colors.



The PS Gamma Adjuster enables users to obtain the color they expect, by controlling the component amounts of primary color toners by the software when they could not obtain the color they expected. This feature can also be used to adjust the dot gain of the component amount of each primary color, and control the amount of toner that is transferred as well. Users can designate the definition of the gamma curves that they create, at the time of printing once they register it in the PPD file or SPD file of a PostScript printer.



The Color Correct utility makes it easier for users to adjust colors, control the lightness and darkness commonly found in applications such as Microsoft® Word, Excel® and PowerPoint®.



## WHAT WE LIKED

- Exceptionally easy-to-use with a well designed color LCD screen and a navigation panel that makes operation simple.
- The PCL, PostScript, and XPS drivers have nearly the same user interface, so users will be able to quickly switch from one driver to another.
- All print drivers provide bi-directional communication, so users can quickly check device status.
- BERTL found it very easy to replace the toner, drum and paper on this device.
- All of the misfeed access areas are easy to locate and access.
- Job Accounting Software enables administrators to track color and monochrome prints by user or department.
- Toner cartridges and drum units can be purchased and replaced separately.
- With OKI Printing Solutions' PrintSuperVision, administrators can install, configure, monitor and manage OKI printers and most third-party SNMP-based network devices.
- PrintSuperVision provides for tracking color and black-and-white printing costs, printing activity and usage. Administrators can generate reports (including CVS reports) for bill-back and cost-accounting.
- Web-based printer home page makes it easy for administrators to configure the C610dtn's network settings.
- Web-based printer home page makes it easy for clients to view current device and consumables' status.
- Job Accounting Software and Color Access Policy Manger software for tracking usage, generating usage reports and limiting color usage.
- Email Printing allows emails to be send and printed directly to the printer without any user interaction.
- User-friendly installation software gets the Okidata C610dtn out of the box and running smoothly on your network in minutes.
- The Color Correct utility makes it easier for users to adjust colors, control the lightness and darkness commonly found in applications such as Microsoft® Word, Excel® and PowerPoint®.
- Advance security features available with optional 16GB SD memory card include: Encrypted Secure Printing, PIN/password-enabled; AES 256-bit encryption; Message Authentication Code (MAC) Network Security, IP address filtering, MAC address filtering, SNMP v3, SSL/TLS, IPP over SSL/TLS, E-mail authentication, and protocol lockouts.



## MEDIA INPUT

The Okidata C610dtn comes standard with one 300-sheet paper drawer, one 530-sheet paper drawer and a 100-sheet multi-purpose tray. For added paper capacity users can add another 530-sheet paper drawer increasing to a maximum paper capacity of 1,460 pages. A wide range of paper sizes and weights which include sizes up to 8.5"x14" and up to 140 lbs index (250 gsm) are supported.

Media Handling Checklist	
Minimum/Maximum Media Weight	Main/2nd/3rd Tray 17 lb. bond – 120 lb. index (64 – 220 gsm); manual feed via multi-purpose tray 17 lb. bond – 140 lb. index (64 – 250 gsm); duplex 17 lb. – 32 lb. bond (64 – 120 gsm)
Feeds maximum media weight from all sources?	No



The Okidata C610dtn shown here comes standard with one 300-sheet paper drawer, one 530-sheet paper drawer and a 100-sheet multi-purpose tray.

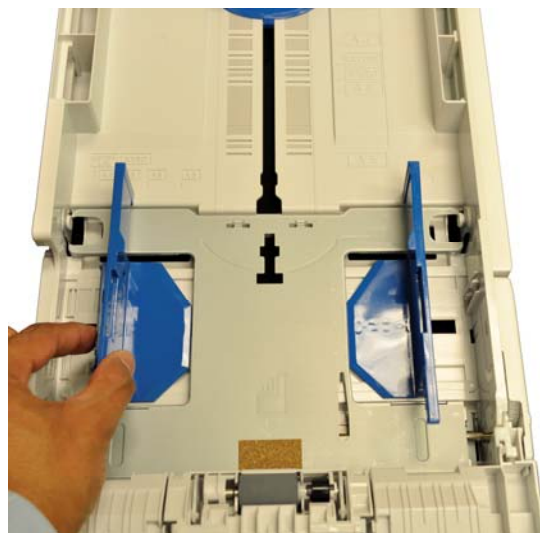
## LOADING MEDIA

Media Loading Checklist	
Drop-in loading of a full ream of paper?	*Yes
Spring-loaded ramps in paper trays?	Yes
Geared media size side guides?	Yes
Captured rear media guide?	No
Automatic paper size detection?	Yes

\*With the 530-sheet paper drawers.



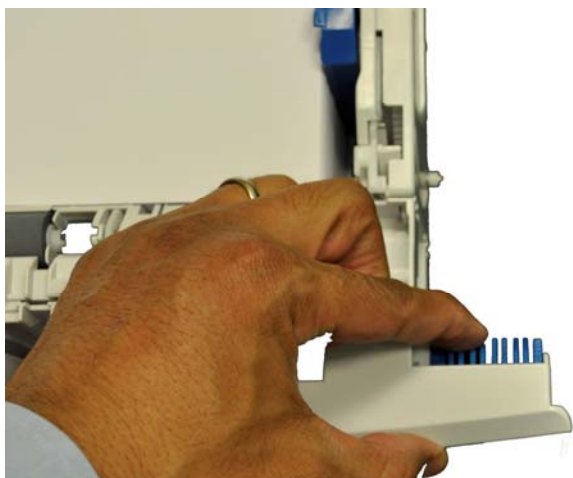
The 100-sheet multi-purpose tray can be adjusted by sliding these levers into place.



**Above and next page:** In order to adjust all the paper drawers to accommodate different paper sizes, the user squeezes and slides these blue guides into place. BERTL found it easy to adjust the paper drawers.



The output bin can hold a maximum capacity of 150 letter/legal sized sheets.



**Above and below:** All paper drawers are equipped with a media size dial. Once users adjust the paper drawer they simply need to change the blue dial to the desired paper size.



### WHAT WE LIKED

- 100-sheet bypass tray is easily adjusted to accommodate different paper sizes including envelopes.
- Paper capacity can be expanded up to 1,460 sheets for longer uninterrupted operation.
- Easy to adjust and fill all paper cassettes.
- Flexible design to meet any business needs with the ability to modify configurations (one to three paper drawers).
- Handles media from 3" x 5" cards, 4" x 6" and 5" x 7" photo paper, to banner-size sheets.
- Single Pass Color™ Digital technology for printing up to 140 lb. index stock (250 gsm) and banner sheets up to 8.5" x 52".

OKI Printing Solutions sets new performance standards with the design of the new C610dtn color printer. This versatile compact printer replaces the Okidata C5950 printer at a low cost of \$1,149. The new C610dtn printer has been designed to deliver faster productivity, outstanding image quality, superb ease of use with a competitive total cost of ownership. During BERTL's extensive testing of the C610dtn, this office-color, LED-printer performed exceptionally well. BERTL observed the following when testing the C610dtn:

- Tested simplex black-and-white network-print speed was as fast as 34 ppm using both the PCL6 and PostScript drivers, matching Okidata's rated speed of 34 ppm.
- Tested simplex black-and-white network-print speed was as fast as 24 ppm using the XPS driver.
- Tested simplex color network productivity was up to 32 ppm using the PCL driver, 21.8 ppm with the PostScript driver and 14.4 ppm using the XPS driver.
- Photos and business presentations were impressive showing great levels of detail and resolutions.
- The Okidata C610dtn also offers users better color quality control over their color output. The Color Swatch and Color Correct features enhance the printer's color capability.
- The LCD color display with graphical navigation makes it easy to program jobs in seconds.
- In the software department's ease-of-use, the Okidata C610dtn print drivers and software were very easy to use and install while Okidata's embedded web page called PrintSuperVision provides very detailed information about the device configuration and consumables status for clients and administrators.
- To help control the costs associated with printing in color, the C610 offers Job Accounting and Color Access Policy Manager (CAPM) which lets users control and monitor color usage by defining who can print and what gets printed. Access levels can be assigned by user name, PC/server name, application, file name and web sites.
- Vast security options include Encrypted Secure Printing, PIN/password-enabled; AES 256-bit encryption; Message Authentication Code (MAC) Network Security, IP address filtering, MAC address filtering, SNMP v3, SSL/TLS, IPP over SSL/TLS, E-mail authentication, and protocol lockouts making this product a cut above the rest at this price point.
- Versatile media handling and flexibility, with the ability to print on stock as heavy as 140 lb. index (250gsm) and paper sizes up to 8.5"x 14".
- Also handles media from 3" x 5" cards, 4" x 6" and 5" x 7" photo paper, to banner-size sheets.
- Ability to expand paper supply to up 1,460 sheets.
- User-friendly installation software gets the Okidata C610dtn out of the box and running smoothly on your network in minutes.
- Ease of maintenance is effortless, with top-loading toner, easy misfeed access, and paper tray loading.
- Monthly duty cycles of up to 75,000 pages.
- Okidata delivers a 24/7 hour customer support hotline for additional support.
- The Okidata C610dtn has superior energy saving features, which include fast warm-up, fast first page out times, low power consumption and acoustic noise control.
- One year system warranty and a 5 year warranty on the digital LED printheads for added peace of mind.

Considering Okidata C610dtn's exceptional overall performance in testing, great ease of use, great office-color image quality, and exceptional print performance, BERTL awards the OKI C610dtn its Five Star *Exceptional* rating and highly recommends the device for workgroups that require a reliable and fully loaded color workgroup printer.

OFFICE

### About BERTL

---

The success of an organization depends on its ability to manage its information and assets. An effective workflow process requires the complex integration of information, devices, software and people.

IT managers, office managers, and other knowledge-management professionals need to know what digital imaging devices would best serve their specialized workflow processes.

BERTL's services are designed around this real-world framework, delivering business consumers the independent analysis and insight needed to make critical decisions about digital imaging's role in their organization.

### Independent Analysis and Insight

---

BERTL's reports, comparative data, and strategic guides look at digital imaging through the eyes of the business user. The research examines not only the technical features, but also vertical market applications, and business benefits. The impact on worker productivity is a primary concern.

BERTL is 100 percent independent. It receives no funding from manufacturers and all product evaluations and reports are published at BERTL's own expense for its subscribers. Business users worldwide trust BERTL for objective, unbiased analysis of digital imaging systems.

### BERTL Services

---

#### Reports and Star Ratings

BERTL analysts provide detailed reports on the technical and practical benefits of thousands of color and monochrome workgroup, office, graphic arts, and production devices.

#### Product Specifications

DataCheck Gen II provides the most current competitive data on printers, copiers, MFPs, fax devices, wide format printers, scanners, and more.

#### News, Interviews, and Analysis

The ITchat online magazine provides insight into the dynamics and trends of the digital imaging marketplace through interviews, feature articles, and software reviews.

### BERTL Awards

---

BERTL analysts recognize the leading devices and software solutions in the annual BERTL's Best awards. BERTL also honors the performance of manufacturers in the annual Readers' Choice selections.

### Contact BERTL

---

BERTL Inc.  
363 Route 46 West, Suite 100  
Fairfield, NJ 07004  
Phone: 1-973-882-0200  
Fax: 1-973-882-0201  
Email: [info@bertl.com](mailto:info@bertl.com)  
[www.BERTL.com](http://www.BERTL.com)